



HUBBELL, ROTH & CLARK, INC
Consulting Engineers

HRC Provides Vast Array of Supplemental Services

You may be surprised to find out about the vast array of HRC's services and how often HRC is retained by municipalities and private clients to provide supplementary services on a one-time or as-needed basis. Did you know that HRC provided traffic engineering services as part of a consultant team for the preparation of traffic incident management plans for the Super Bowl XL in Detroit? Or, that HRC was recently retained by MDOT for the I-275 & Eureka Road lighting project to interpret the results of LED roadway luminaire tests to compare photometric readings of the existing 250 watt High Pressure Sodium (HPS) luminaires and proposed Light Emitting Diode (LED) roadway luminaires?

With tighter budgets and shrinking staff, more communities are turning to HRC for assistance on an as-needed basis. Other examples of supplementary or as-needed services include:

- Plan Reviews – Zoning ordinance/Building Code Reviews
- Traffic Engineering – Signage/Maintenance of traffic plans for events, etc.
- ADA Compliance – Reviews/Assessments/Recommendations for Improvements/Expert Witness
- Construction Administration – Construction Engineering/Assistance with community relations during disruptive construction projects
- Materials Testing – Concrete Temperature & Maturity/Pavement Evaluation/Foundation & Retention Systems
- Electrical Engineering Services – Generators/SCADA Systems, etc.
- Lighting Design – Decorative Streetscape/Mast/Parking Lot
- Architectural Services – Building Renovations/Pumping Stations/Transit Centers/Comfort Stations/Harbor & Marina Design
- Environmental Engineering – Stormwater Management/Soil Erosion & Sedimentation Control/Permitting
- Innovative & Cost-Saving Wastewater Processes – Waste to Energy
- Infrared Scanning – Detect Energy Losses/Building Deficiencies, etc.
- Bridge Inspections – Federal Highway Administration National Bridge Inspection Standards
- Surveying – Boundary Surveys/Construction Layout
- Grant Funding – Funding Sources/Application Assistance
- Marketing – Newsletters, Flyers, Advertisements, Presentations, Display Materials

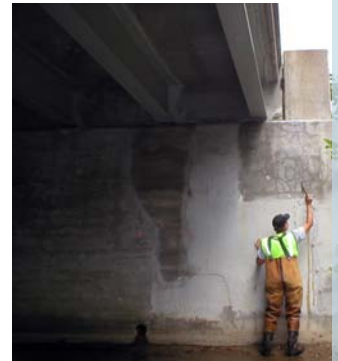
HRC qualified staff are available to assist with these and other services on a one time or as-needed basis with typical immediate response times.

REPRESENTATIVE LIST OF AS-NEEDED SERVICES CLIENTS

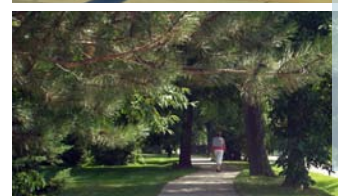
HRC provides as-needed professional engineering services to a long list of municipal cities, villages, townships and governmental agencies. A representative sampling follows:



- Michigan Department of Transportation
- Wayne County Airport Authority
- Wayne County Department of Public Services
- Washtenaw County Road Commission
- Road Commission for Oakland County
- Livingston County Drain Commissioner
- General Motors Company



Visit us on the web
at
www.hrc-engr.com



For More information on HRC's As-Needed and Supplemental Services, please contact:
Mr. George Hubbell II, P.E., President at (248) 454-6300 or gghubbell@hrc-engr.com